

A group of nine staff members from Solent NHS Trust are gathered around a table, smiling and looking towards the camera. They are dressed in a mix of professional and clinical attire, including blue scrubs and patterned dresses. In the foreground, a woman is cutting a large cake decorated with chocolate swirls. The background is a plain, light-colored wall. A large blue curved graphic element is on the right side of the image.

**Regulatory update and
ratings following CQC
inspection**

Sue Harriman,
Chief Executive Officer

2 April 2019

About us

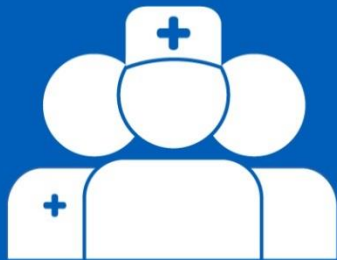
Established on...



Nearly one million service user contacts

£187,000,000

Annual income for 2017-18



4,086

We employed 4,086 clinical and non-clinical staff in 2017-18 (2,899 WTEs)



Portsmouth, Southampton and specialist services pan Hampshire



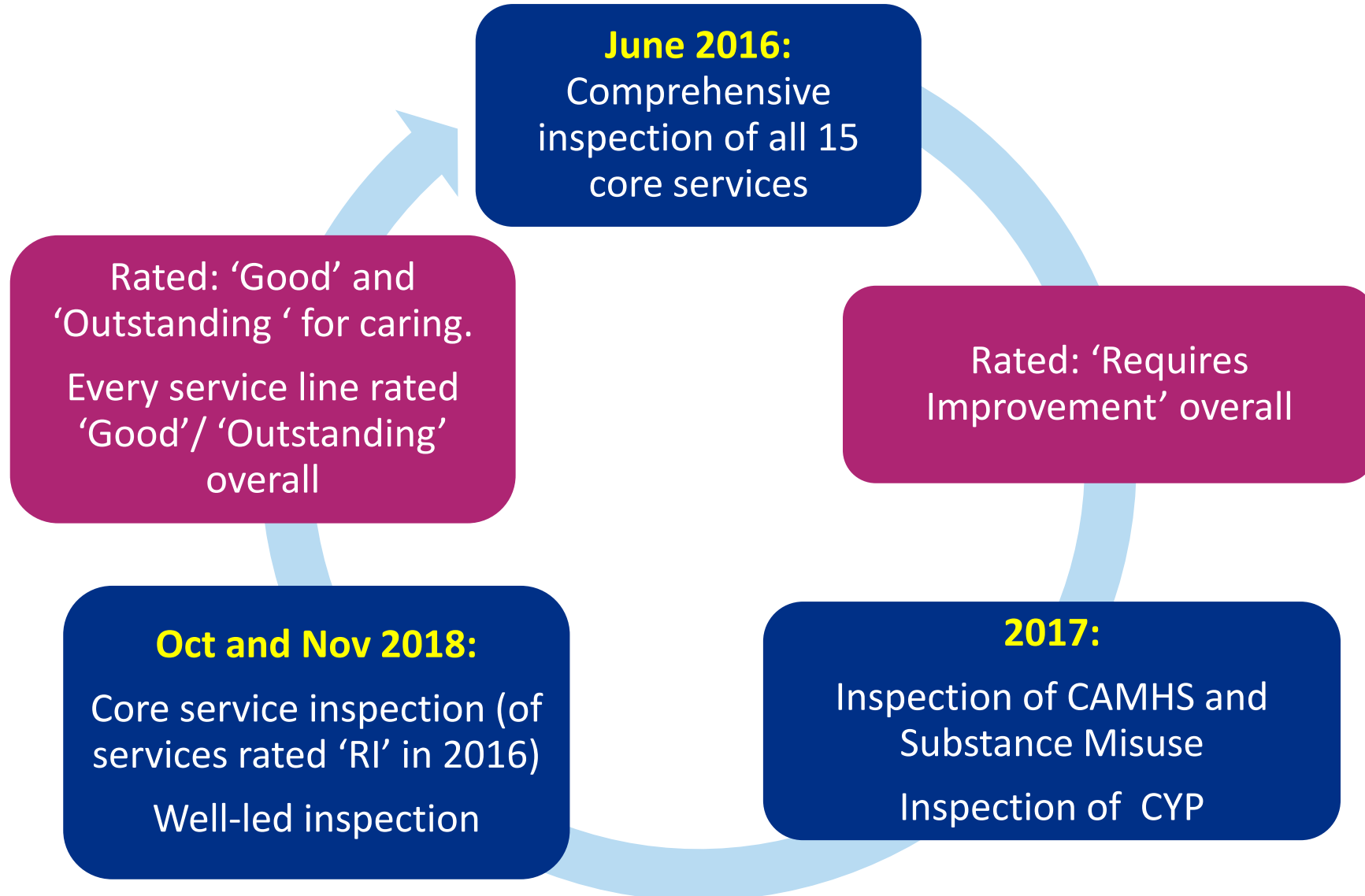
Our Strategy

At Solent NHS Trust we all share an ambitious vision to **make a difference** by keeping more people **healthy, safe** and **independent** in, or close to their own homes.

People, values and **culture** drives us. The best people, doing their best work, in pursuit of our vision. People dedicated to giving **great care** to our service users and patients, and **great value** to our partners.

We aspire to be the **partner of choice** for other service providers. With them we will **reach even more people**, and care for them through even more stages of their lives. Ultimately it is the **people** we care for who will tell us if we are successful and who **will help shape our future care**.

Our improvement journey



2016						
OVERALL	RI	RI	G	G	RI	RI
Domains	Safe	Effective	Caring	Responsive	Well Led	Overall
Community Services Rating						
CHS – Adults	RI	G	G	G	G	G
CHS - CYPF	I	RI	G	RI	RI	RI
CHS – inpatient	G	G	G	G	G	G
End of life	G	G	G	G	G	G
Sexual Health	G	G	G	G	G	G
Overall	RI	G	G	G	G	G
Mental Health Rating						
PICU	RI	G	G	G	G	G
Long stay/Rehab	RI	G	G	G	G	G
OPMH – Inpatient	RI	RI	G	G	RI	RI
CMH - AMH	G	G	G	G	G	G
MH Crisis	G	G	G	G	RI	G
CAMHS	I	RI	G	RI	RI	RI
CMH- OPMH	RI	RI	NR	G	RI	RI
LD	G	O	O	O	O	O
SMS	I	RI	G	RI	RI	RI
Overall	RI	RI	G	G	RI	RI
PMS Rating						
Adelaide	G	G	G	G	G	G

Areas of 'outstanding' practice

Clear and ambitious vision

Learning and quality improvement culture

Compliance with IG

Strong leadership and development within the organisation

The active role we take in joining up, and shaping, future care

The take up for the national Child Monitoring Programme

Results in National Institute of Health Research's annual league tables

Young Shapers: Involving young people in the development of services

Our holistic approach to physical and mental health

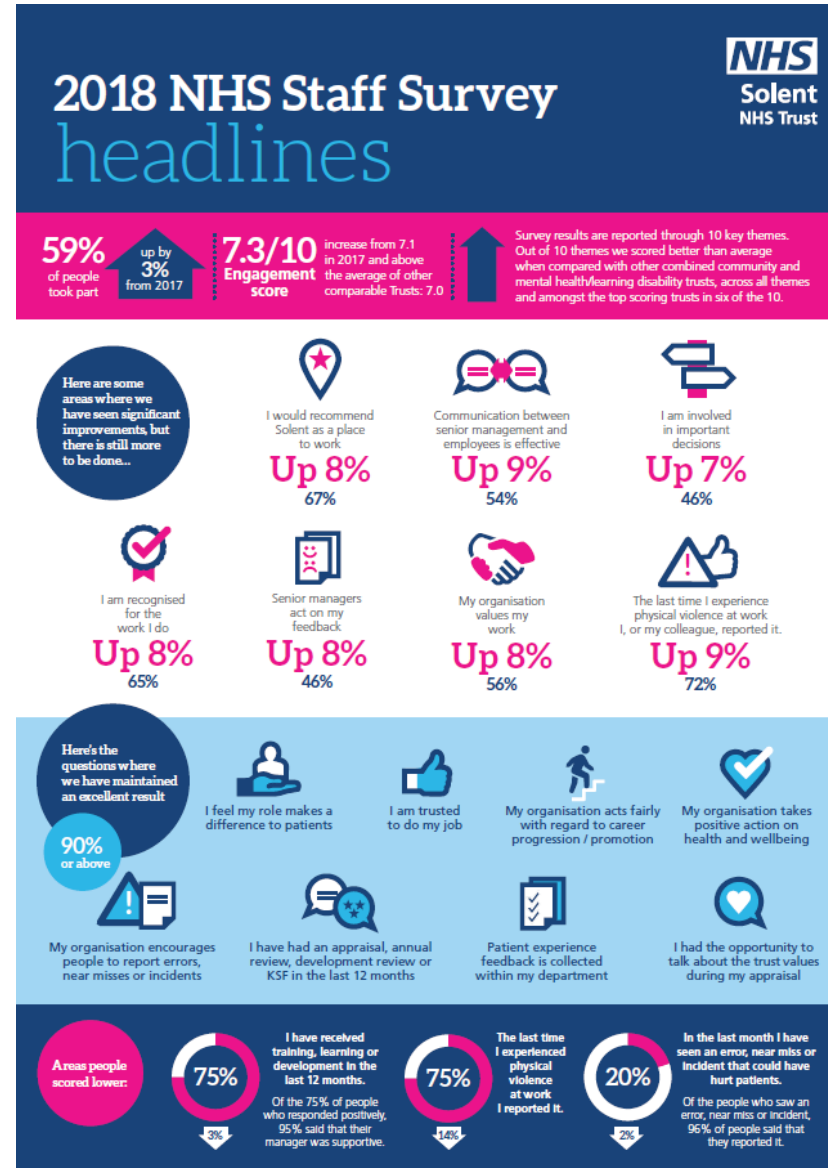
Areas for improvement

Requirement Notice for breach of Regulation 12 (2)(g): The proper and safe management of medicines.

One small discreet location

36 areas of minor breaches of regulations.
Not mandated, but positively influence Trusts to deliver best practice.

Post inspection update: NHS Staff Survey results



A group of young children in a classroom, wearing yellow school uniforms, are holding up various paper crafts they have made. The crafts include paper snakes, paper hats with stars and hearts, and paper necklaces. The children are smiling and looking towards the camera. The background shows classroom desks and chairs.

Thank you and questions